



2021 NEWSLETTER

CENTER FOR YOUTH INTEGRATION

The only organization that for 17 years deals with the prevention, protection and improvement of the position of children and youth in street situation and those who are at risk of being in street situation, but also children and youth refugees and migrants.

Director: marko.tosic@cim.org.rs

WWW.CIM.ORG.RS

+381 11 3390258

DROP IN SHELTER

During the 2021, the impression was that the Drop In shelter became even more important for children who are in a street situation. The number of beneficiaries was increasing daily – during the 2021 the average number of children who were visiting shelters was 80 (for comparison, that number was 55 in 2019 and 75 in 2021).

The corona virus pandemic has contributed to the deterioration of the living conditions for the beneficiaries of the CYI and their families. As most families earn money by collecting and then selling secondary raw materials, and the purchase price has dropped drastically, we believe that this is certainly one of the reasons for the worsening situation in which families found themselves – firstly, increased need for food, clothing and footwear, but also personal hygiene products and other necessities.

One of the biggest challenges that beneficiaries of the Drop In shelter were facing in 2021 was related to their education. Most children did not have access to education at all during the time when classes were organized online, and those children who technically could follow school curriculum, did not receive adequate support from their parents.

Due to all the above, during 2021, in the premises of both Drop In shelters, educational activities were held on a daily basis, with the goal to enable each child to master the basics of reading, writing and arithmetic, in accordance with their age.

For two years now, the Drop In services has been adapting all its activities to the epidemiological situation, so the number of children and adults who can stay in the space at the same time is limited, donations are taken in front of the space, and working hours are extended to make space available to children during the day.

During the 2021, on a daily basis, the Drop In shelters shared at least:

65 sets of clothes

65 school snacks (when classes were held in schools)

10 jackets and 15 pairs of shoes

80 meals a day (breakfast, lunch, dinner, snack)

During 2021, Drop In shelter supported over 400 girls and boys aged 5 to 15.



svratistebgd



Evangelical Lutheran Church in America
God's work. Our hands.

Coordinator: mina.lukic@cim.org.rs

WWW.CIM.ORG.RS

+381 11 3390258



PROGRAMME OF EDUCATION

During the year 2021 Programme of education, once more was an extremely useful link between our beneficiaries and their families and public institutions. Excellent cooperation continued with the preschool institution and schools from the Municipality of Palilula, the Center for Social Work Palilula and health institutions from the territory of Belgrade.

The Programme of education has been implemented for twelve years and during that period, we have supported more than 600 boys and girls.

Our mission is to include children in the educational system of Serbia, provide them with support during this process as well as to prevent their drop out of primary education.

A Programme of education team consists out of professionals, and direct support to children is provided by educators, social worker, nurse, speech therapist, as well as our outreach workers. During the previous year, in the implementation of our activities, we were supported on average by 28 volunteers monthly.

Our beneficiaries are boys and girls, preschoolers, first and fifth graders and their families who are living in extreme poverty in two informal settlements in the Municipality of Palilula. The children we are working with are exposed to discrimination, numerous risks and most often do not have access to the institutions of the system.

Throughout our activities, we provided support to our beneficiaries, increased their participation in education and helped them actively master school curriculum. In addition to direct educational support to children on workshops or during school classes, support to family members in terms of mediation with the institutions of the system, clothing, footwear, hygiene packages and snacks that are provided daily, one of the priorities of the Program is organizing extracurricular activities to help in the process of socialization of our beneficiaries.

Program of education in 2021:

233 beneficiaries

298 workshops held for children

97 school classes attended in order to support the children

32 organized extracurricular activities

57 workshops held with parents



Coordinator: lazar.milosevic@cim.org.rs

WWW.CIM.ORG.RS

+381 11 3390258



EMPLOYMENT SUPPORT PROGRAM



During 2021 the Employment support program supported 20 street involved youth, former Drop in Shelter's beneficiaries. They were enrolled in official course for waiters and bartenders at the Center for Education and Culture "Božidarac 1947" while they attended the necessary work practice in our social enterprise, Cafe Bar 16, with the constant support of the professional team and local employers, members of the "Inclusive Employers Network". Additional 5 local employers became active members of the Network and provided the possibility of work practice, acquiring additional vocational skills and formal employment to our beneficiaries. We have regularly organized educational workshops, as part of constant support to beneficiaries in acquiring additional knowledge and skills, with special focus on topics such as professional orientation, setting goals, communication skills, capacity building, development of critical thinking and the importance of formal employment, additionally upgrading their educational level, primarily in Mathematics, Serbian and English. Psychosocial team provided constant support to all beneficiaries working on their motivation and empowerment.



CAFE BAR 16

Employment program in 2021:

20 youth enrolled in the Program

20 youth have completed official course for waiters and bartenders and work practice

14 have passed final exam and received certificates for waiters and bartenders

13 youth are formally employed

7 youth have been supported to continue with formal education

16 local employers have become members of "Inclusive Employers Network"

The Covid 19 pandemic has endangered service industry sector and affected the sustainability of the Cafe Bar 16.

Thanks to the # Podrzi 16 campaign - Let's help Cafe Bar 16 to survive, on the donation.com crowdfunding platform and the company Jaffa doo Crvenka, which donated funds to cover the lease costs for 6 months, we have managed to ensure the sustainability of Cafe bar 16.

During 2021, Cafe Bar 16 continued to breakdown the prejudices and stereotypes through its work, providing street involved youth with the opportunity to become equal members of society.

At the moment, 4 youth, formerly supported through Employment Support Program are permanently employed in Cafe Bar 16.



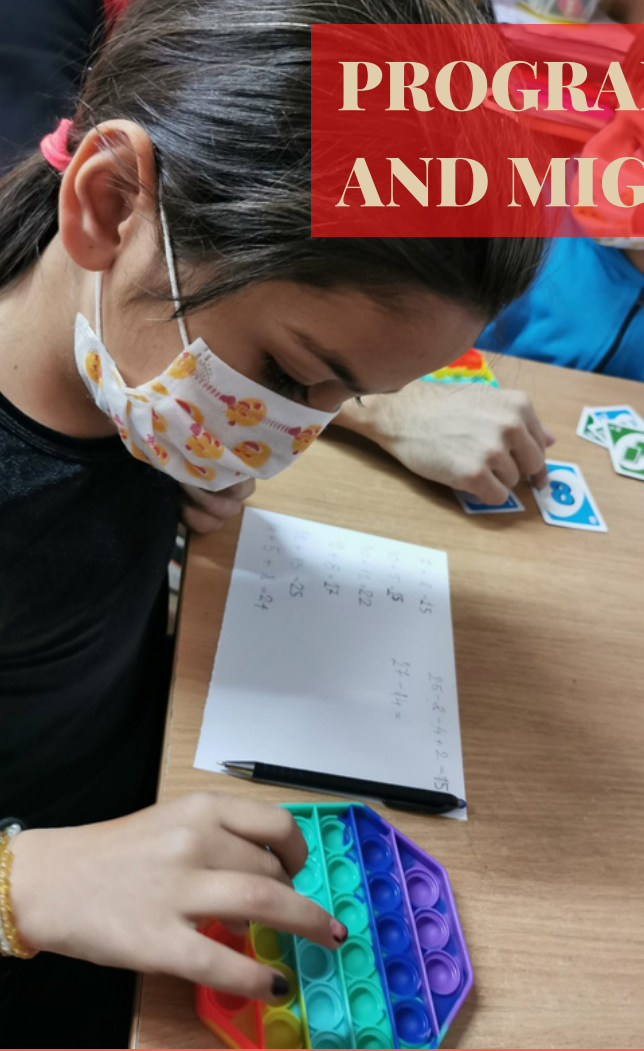
Coordinator: jasna.braticevic@cim.org.rs

WWW.CIM.ORG.RS

+381 11 3390258



PROGRAM OF SUPPORT REFUGEE AND MIGRANT CHILDREN



Program of support refugee and migrant children was implemented at 2 locations during 2021. We ran 2 corners for children within 2 units for the reception of refugees and migrants, Miksalište and the Asylum Center in Krnjača.

Regardless of the current COVID 19 pandemic in 2021, the influx of refugees and migrants has not decreased compared to previous years, the needs of the beneficiary group have not changed basically, but the pandemic situation has made it very difficult to work with refugee and migrant children having in mind all the preventive measures that must be respected in order to be safe.

Our team was present in Miksalište every working day of the week and, together with representatives of state institutions and representatives of non-governmental organizations, primarily worked on providing protection for the refugee and migrant. Special focus was placed on working with unaccompanied children who represent a group of refugees and migrants at greatest risk of all forms of abuse.

Within the child friendly space in AC Krnjača, in addition to regular activities that we provided this year as well as previous ones (IT corner, psychosocial support through a package of creative, educational and recreational activities, counseling work with children and parents), during 2021. We have been involved in a structured formal response to the educational needs of children from the camp. CIM recognized the importance of providing access to quality education for refugee and migrant children and in order to provide that got involved in the realization of the Akelius project as one of the steps towards the realization of that goal. Our teams in the field facilitated the process of online classes for children from the camp on a daily basis together with representatives of state actors, but also international organizations and thus directly contributed to achieving this goal.

Program of support refugee and migrant children in 2021:

We have provided services for over 800 children coming from the refugee and migrant population

We have provided 1269 pieces of information necessary for a safe stay in Serbia or the continuation of the trip

We have referred our beneficiaries 1010 times to other available services in the community

We realized 1179 educational services



Coordinator: aleksandra.micic@cim.org.rs

WWW.CIM.ORG.RS

+381 11 3390258





CHILD PROTECTION HUB



The Child Protection Hub is a regional initiative that promotes the continuous improvement of child protection practices and policies in Southeast Europe, through a participatory approach and community of practice. We strive to connect regional cooperation through interaction and exchange of ideas, both online and offline, especially through our web platform, www.childhub.org. This interactive platform brings together more than 17,000 child protection experts from Europe and beyond, where we share experiences and knowledge, learn from each other, offer and receive support.

The initiative includes partners from 12 countries: Bosnia and Herzegovina, Bulgaria, Croatia, Montenegro, Serbia, Albania, Hungary, Kosovo, Moldova, Romania, Greece and Ukraine.



REVIS

The REVIS project brings together 5 experienced child protection organizations from South-Eastern Europe which have a rich experience in advancing progressive principles in reducing violence against children, building capacity and knowledge amongst childcare professionals and empowering children to be an integral part of the debate and participate in tackling harmful practices.

These organizations are: Terre des hommes, Hungary; Terre des hommes, Romania; Brave Phone, Croatia; Center for Youth Integration, Serbia and Social Activities and Practice Institute Bulgaria.

The objectives of the project are: develop a program of engagement in four countries – with the help of 80 trained facilitators and 8 trainers, based on the findings of a qualitative research conducted into the social and gender norms contributing to violence against children, to work with 1600 children, youth and teachers on activities, campaigns and programs that prevent and reduce peer-to-peer violence in and around schools and other educational settings (like afterschool).



Co-funded by the Rights, Equality and Citizenship Programme of the European Union (2014-2020)

Child Protection Hub in 2021:

24,610 different published items - news, publications, webinars, manuals, job advertisements, professional materials

17,800 registered professionals and people engaged in the field of protection of children's rights

more than 5,000 professionals have attended some of the online courses and trainings that exist on this site

We invite you to connect with us, become a member, participate, share and help make this common practice even stronger and more influential, with the goal of achieving the best interests of children.

Coordinator: dragana.vuckovic@cim.org.rs

WWW.CIM.ORG.RS

+381 11 3390258





PHILANTHROPY PROGRAM

2021 was the most successful year for Philanthropy program.

During this year, 25 new members joined our Circle of Donors. Also, 2021 is the year we collected the most funds from the corporate sector.

This year was also marked by the campaign "BETTER LIFE FOR EVERY CHILD", that we realized in partnership with Essety company in Lidl stores and raised funds for the renovation of the Drop In Shelter in Krfska street.

In July, we organized our traditional fundraising action "Lemonade Day" and collected 306.440 dinars and provided school supplies for all beneficiaries of all our programs.

End of the year was marked by the support of a large number of individual donors and companies, who supported us with money and in kind donations . We have provided New year's presents for all users of our programs.

Also, companies Sport Vision and Adidas launched the humanitarian action "Let's donate together" to raise funds for hot meals for children in Drop In Shelter and provided 5400 hot meals.

Year of 2021 was marked with donation from company that wanted to stay anonymous, which ensured functioning of Drop In Shelter and Cafe Bar 16 in 2022.

Philanthropy Program in 2021:

Circle of donors:

105 individual donors
35 companies

Donations in kind:

152 organized donations (companies, kindergartens, schools ...)
over 10,000 individual donations

3 successfully implemented fundraising actions:

"Lemonade Day" - school supplies for 500 children

"Better life for every child"- renovation of the Drop In Shelter in Krfska street

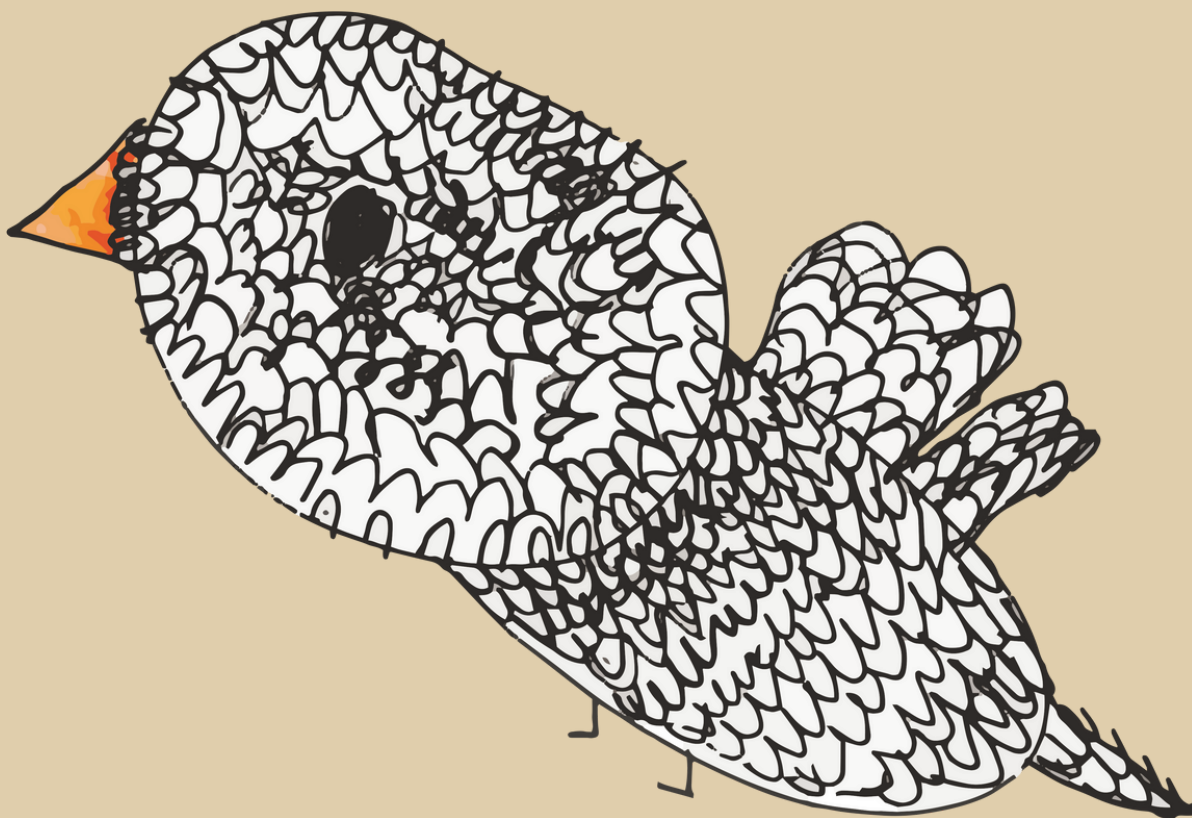
"Let's donate together" - 5400 hot meals for children

Coordinator:neda.marjanovic@cim.org.rs

WWW.CIM.ORG.RS

+381 11 3390258





Support programs of Center for Youth Integration:

bank account for donations: 205-201979-13

 **svratistebeograd@gmail.com**

office@cim.org.rs

WWW.CIM.ORG.RS

+381 11 3390258